



bow street
commercial brokerage

savills

FOR SUBLEASE

TWO INTERNATIONAL DRIVE | PEASE TRADEPORT

PORTSMOUTH, NH 03801

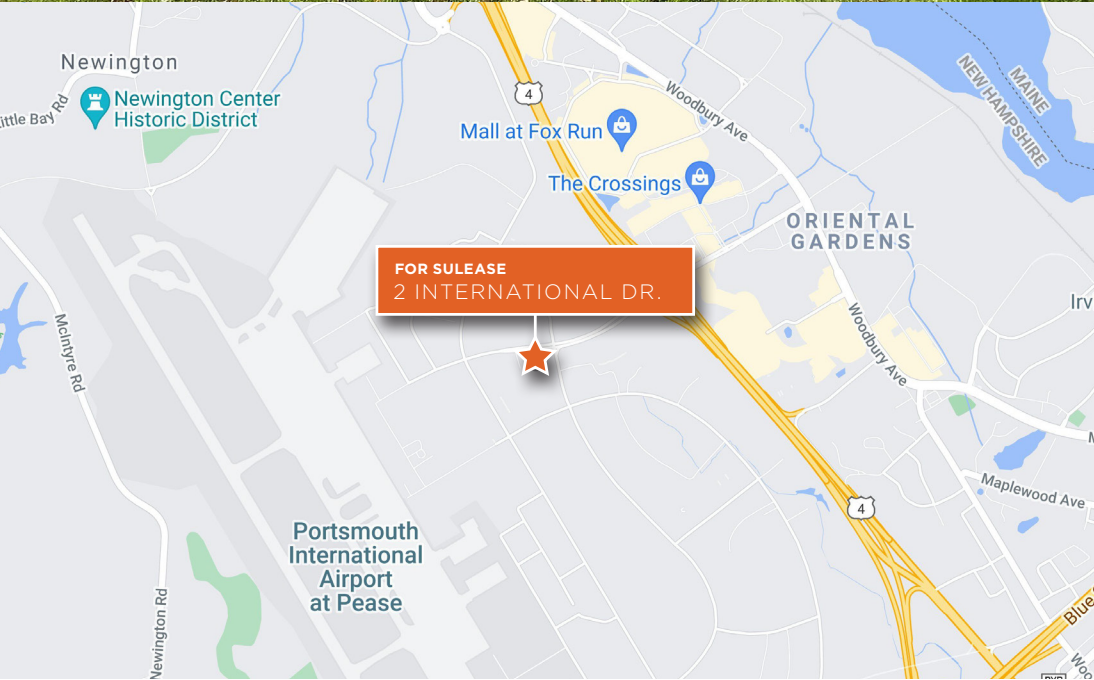
FOR MORE INFORMATION, PLEASE CONTACT:

MARGARET O'BRIEN

Bow Street Commercial Brokerage
+1 603 427 0700
maragaret@bowstcommercial.com

BRUCE SCHUMAN

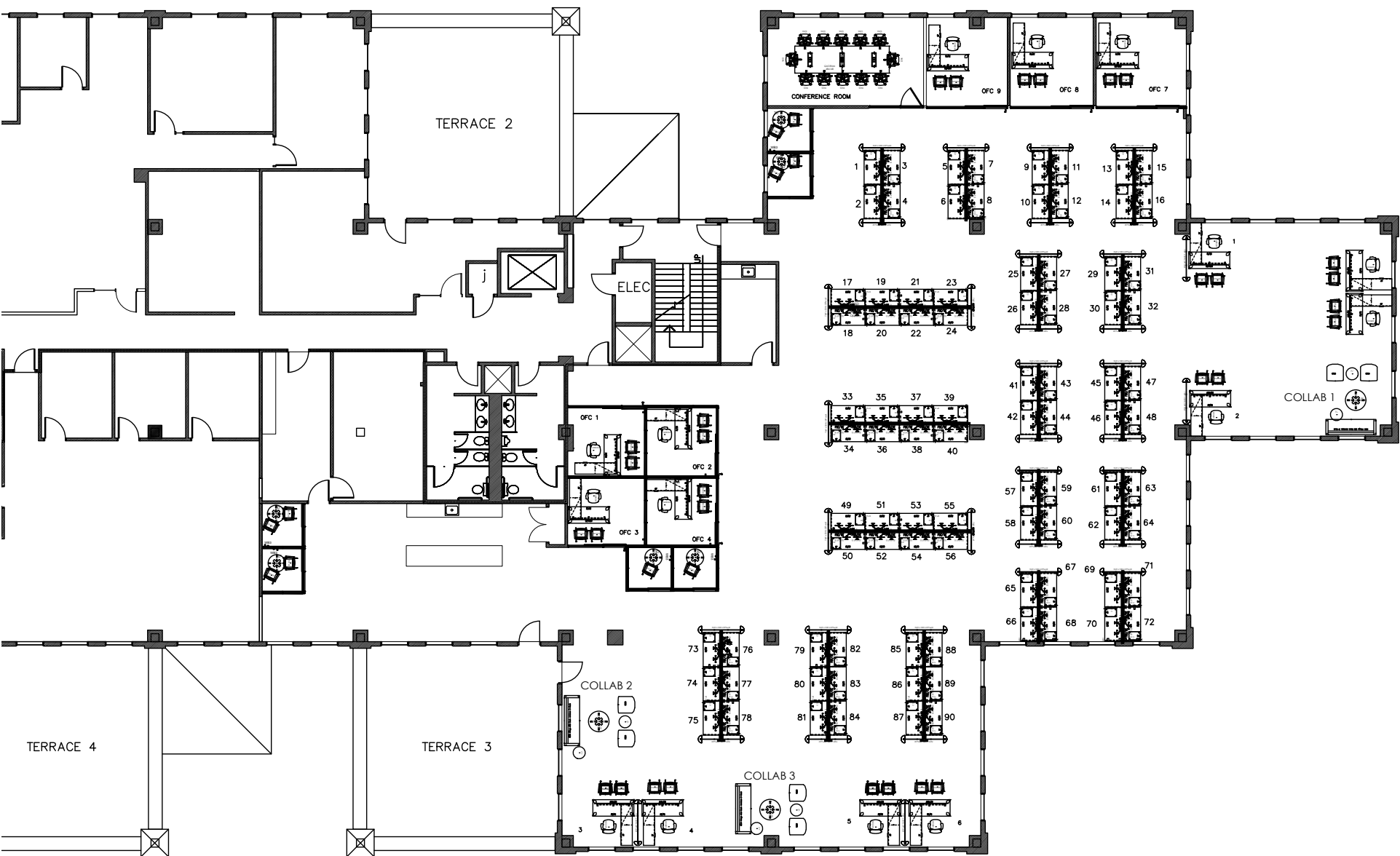
Savills
+1 949 660 3550
bschuman@savills.us



BUILDING FEATURES

Total Building Size:	86,993 SF
Available Space:	13,417 SF on 2nd Floor
Floors:	Three (3)
Land (AC):	5.013± Acres
Year Built/Remodeled:	1998/2019
Water/Sewer:	Municipal Water & Sewer
Zoning:	Office
Data Lines:	T-1
Sprinkler:	Yes
HVAC:	Forced Air; Gas
Parking:	Ample, Free on-site parking; 4.00/1,000 SF
Availability:	Immediate
Asking Sublease Rate:	Call for details
Sublease Expiration:	11/30/2025; Direct lease options available with Two International Group

FLOOR PLAN | 13,417 SF

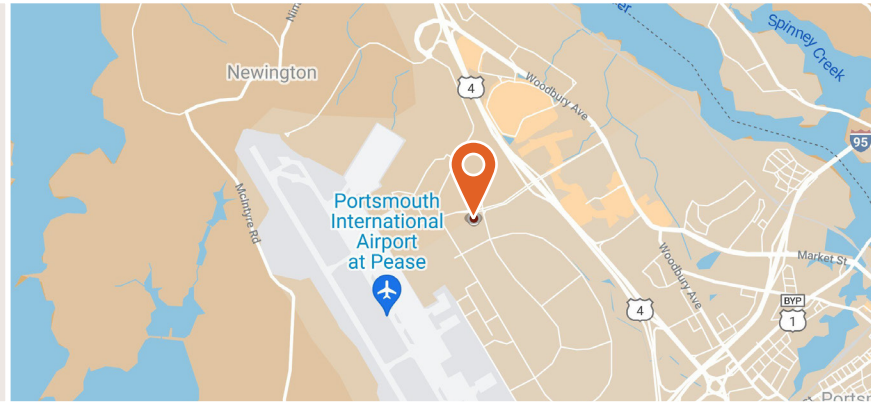


INTERIOR PHOTOS



SPACE HIGHLIGHTS

- This 13,407+ SF office space is located on the second floor directly off the elevator lobby and has a fantastic window line that wraps around the space as well as its own outdoor patio.
- The space can come wired and furnished with a large conference room, glass interior offices, a great kitchen and plenty of open cubicle space.





FOR MORE INFORMATION, PLEASE CONTACT:

MARGARET O'BRIEN

Bow Street Commercial Brokerage
+1 603 427 0700
maragaret@bowstcommercial.com

BRUCE SCHUMAN

Savills
+1 949 660 3550
bschuman@savills.us

All information furnished regarding property for sale, rental or financing is from sources deemed reliable. No presentation is made as to the accuracy thereof and it is submitted to errors, omissions, change of price, rental or other conditions, prior sale, lease or financing, or withdrawal without notice.