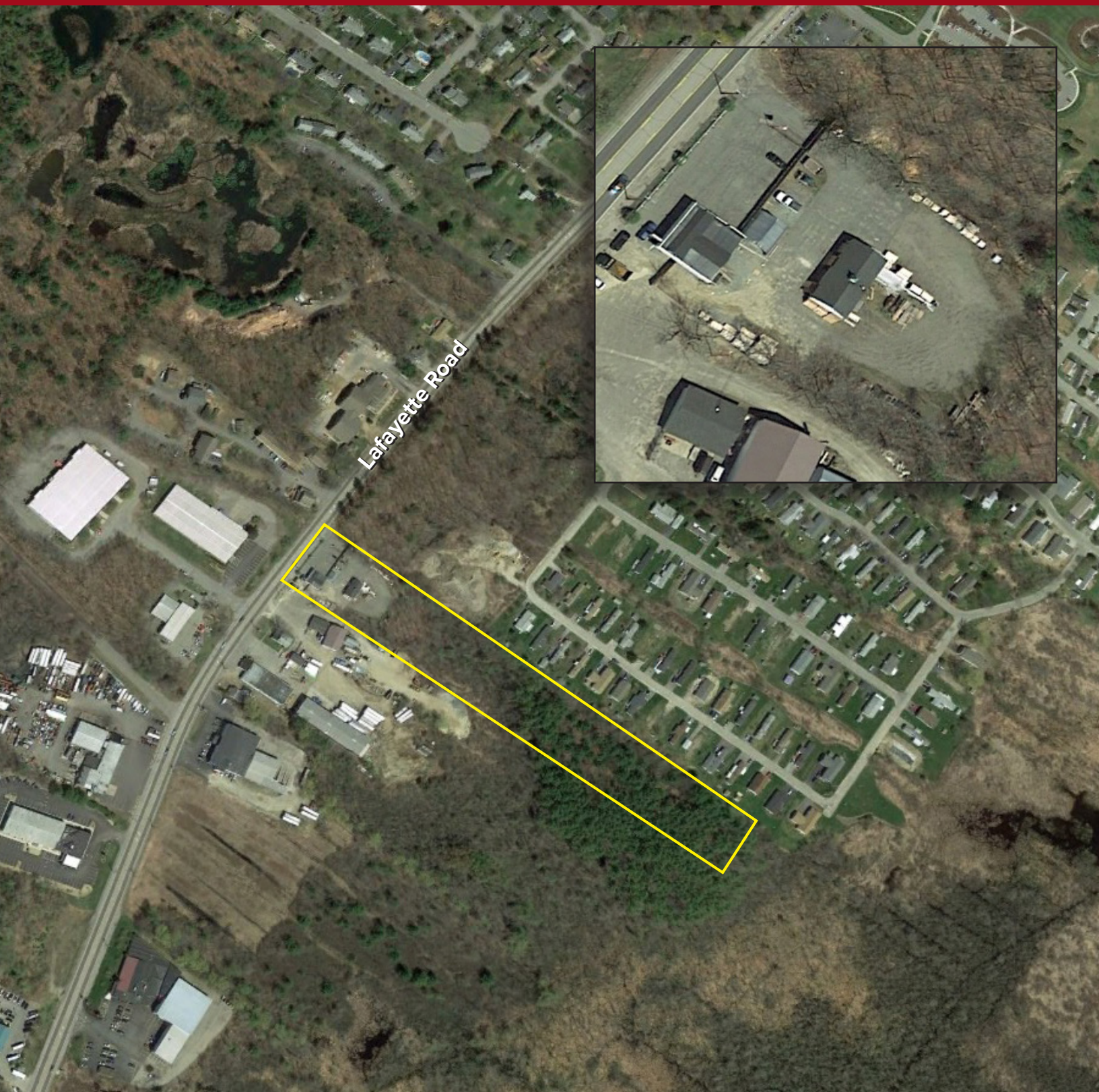


3601 Lafayette Road | Portsmouth | NH



Retail / Office Space

3601 Lafayette Road | Portsmouth | NH



Retail/Office Space Available for Lease

Great opportunity for retail or office user to lease this multi-functional space on busy Route 1 in Portsmouth, NH. This property is comprised of a 2,730 SF retail building with two curb cuts and great visibility. Loads of parking.

For further information call
Margaret O'Brien at 603.427.0700.



The information contained herein has been given to us by the owner of the property or other sources we deem reliable. We have no reason to doubt its accuracy, but we do not guarantee it. All information should be verified prior to purchase or lease.

For more information, please contact:

bow street, LLC
111 Bow Street, Portsmouth, NH 03801

Margaret O'Brien
M: 603.828.7245
O: 603.427.0700

margaret@bowstcommercial.com
www.bowstcommercial.com

111 Bow Street, Portsmouth, NH 03801 | 603.427.0700 | www.bowstcommercial.com

Property Specifications

Retail/Office:	First Floor	1,365± RSF
	Lower Level	1,365± RSF
	Total	2,730± RSF
Land Area:	4.974 Acres	
Year Built:	1930, 1990	
Zoning:	GI - Gateway Corridor	
HVAC:	Retail Building – baseboard, window unit A/C	
Utilities:	Public water and sewer	
Road Frontage:	165' on Lafayette Road	
Parking:	Parking in front of retail building.	
Traffic Counts:	18,484± VPD per NHDOT 2019	
Availability:	Immediate	
Asking Lease Rate:	\$2,250 per month, NNN	
Triple Net Expenses:	Tenant pays for its own utilities.	
	Insurance:	\$100.00 / mo
	Real Estate Taxes:	\$356.84 / mo
	Landscaping/Snow:	\$200.00 / mo
		\$656.84 / mo



Parking



Office



Garage Bays

Tax Map

